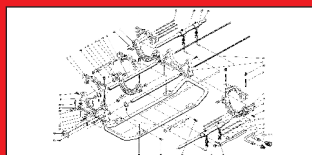


ROWELD P1000W



ROWELD P1000W

SERVICE



5.3975

Intro

Ersatzteile / spare parts	page 1
Hydraulikschaltplan / hydraulic diagram	page 17
Elektroschaltplan / Circuit diagram	page 18

Service Hotline

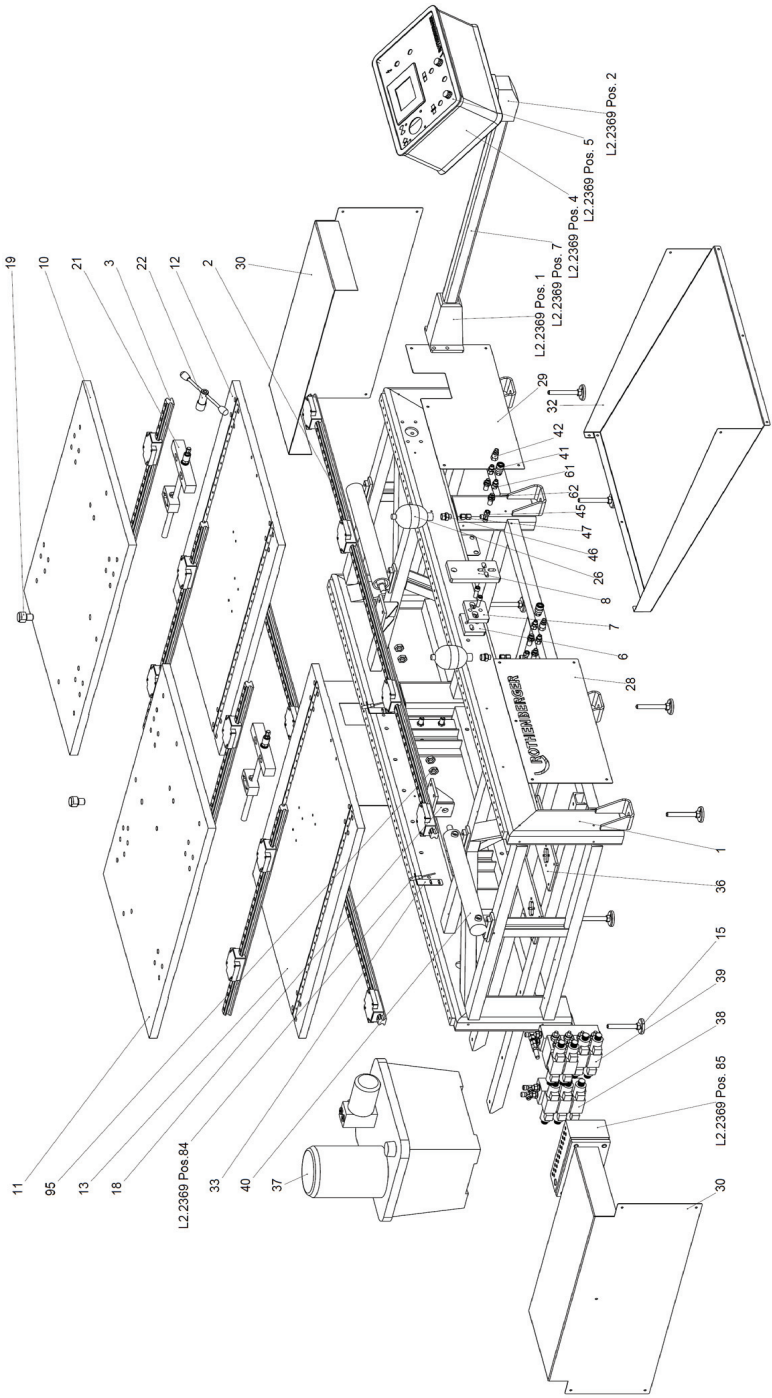
+49 (0) 61 95 / 800 - 638
- 7703
- 7704

email: roweld@rothenberger.com

Ausgabe / Edition 08-2010

Technische Änderungen vorbehalten! Subject to technical modifications!

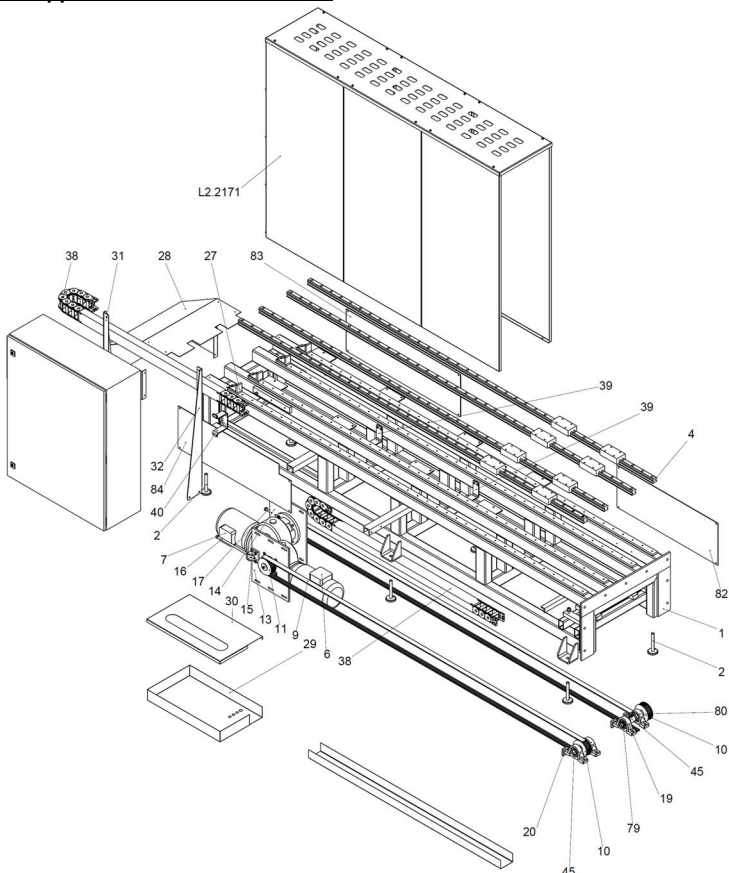
Grundmaschine / basic machine P1000W no L2.2287-i1



Pos.	Bezeichnung	Description	qty.	Nr. /No.
1	Maschinenbett P1000W	Machine base P1000W	1	L2.2162
2	Linearführung mit 4 Wagen	Linear guiding with 4 carriage	2	L2.2191
3	Linearführung mit 2 Wagen	Linear guiding with 2 carriage	4	L2.2192
6	Positionerbock f. Fräser	Position mounting f. trimmer	1	L2.2263
7	Positionerbock f. Fräser	Position mounting f. trimmer	1	L2.2263E001
8	Positionierplatte f. Fräser	Position plate f. trimmer	1	L2.2264
10	Tischplatte oben rechts	Table plate, top, right	1	L2.2163
11	Tischplatte oben links	Table plate, top, left	1	L2.2165
12	Tischplatte unten rechts	Table plate, lower, right	1	L2.2164
13	Tischplatte unten links	Table plate, lower, left	1	L2.2166
15	Maschinenfuß	Mouting foot	8	L8.2518
18	Plattenlagerbock	Bearing block	2	L2.2248
19	Zentrierbolzen	Center pin	2	L2.2276
21	Spindelverstellung für Tisch	Spindle adjustment for table	2	L2.2170
22	Steckgriff-Kpl.	Handle cpl.	2	F8.5135
24	Auflage Hydraulikaggregat	Support hydraulic unit	2	L2.2162E014
26	Druckspeicher P160/P630B2	Pressure reservoir	2	L8.2292
28	Frontblech links	Frontsheet left	1	L2.2173
29	Frontblech rechts	Frontsheet right	1	L2.2174
30	Seitenblech	Side plate	2	L2.2172
31	Seitenblech hinten	Side plate rear	1	L2.2172E001
32	Abdeckblech mitten	Cover sheet middle	1	L2.2175
33	Halter für Sensor	Fastener for sensor	2	L2.2458
36	Halterung für Ventilblock	Fastener for valve block	2	L2.2395
37	Hydraulikaggregat	Hydraulic unit	1	L2.1938
38	Steuerblock mit 3 Wegeventilen	Control block with 3-way valve	1	L2.2131
39	Steuerblock mit 4 Wegeventilen	Control block with 4-way valve	1	L2.2132
40	Hydraulikzylinder	Hydraulic cylinder	2	L2.2141
41	Schnellkupplung Muffe	Quick fitting coupling bushing	4	L8.2351
42	Schnellkupplung Stecker	Quick fitting coupling plug	4	L8.2369
45	Einstellbare L-Anschlußverschraubung	Adjustable L-screw connection	2	L2.2466
46	Gerade Einschraubverschraubung	Screwed socket straight	2	L2.2467
47	Gerader Verbinder	Connector straight	2	L2.2469
49	Elektroausrüstung	Electro equipment	1	L2.2369
50	Druckaufnehmer (0-160bar;0-10V;24VDC)	Pressure sensor	1	L2.0605
51	Kabelkanal 100x60	Cable duct 100x60	1,2m	L2.1748
53	Gerader Einschraubstutzen	Screwed socket straight	10	L8.0782
54	Gerader Einschraubstutzen	Screwed socket straight	5	L2.2332
55	Gerader Einschraubstutzen	Screwed socket straight	10	L2.2333
56	Gerader Einschraubstutzen	Screwed socket straight	20	L2.2334
57	Gerader Einschraubstutzen	Screwed socket straight	5	L2.2335
58	Winkel-Schwenkverschraubung	Angle swivel union	3	L2.2336
59	T-Schwenkverschraubung	T- swivel union	2	L2.2337
61	gerader Einschraubstutzen mit Schaft	Screwed socket straight	4	L2.2161
62	Schottverschraubung	Threaded joint	10	L8.2798
64	HD-Schlauch 2SN DN12, 800lg.	HD-hose 2SN DN12, 800lg.	1	L2.1939
65	HD-Schlauch 2SN DN12, 620lg.	HD-hose 2SN DN12, 620lg.	1	L2.2412
66	HD-Schlauch 2SN DN12, 2580lg.	HD-hose 2SN DN12, 2580lg.	1	L2.2413
67	HD-Schlauch 2SN DN12, 1950g.	HD-hose 2SN DN12, 1950g.	1	L2.2414
68	HD-Schlauch 2SN DN12, 1150lg.	HD-hose 2SN DN12, 1150lg.	2	L2.2415

Pos.	Bezeichnung	Description	qty.	Nr. /No.
69	HD-Schlauch 2SN DN12, 350lg.	HD-hose 2SN DN12, 350lg.	1	L2.2416
70	HD-Schlauch 2SN DN12, 450lg.	HD-hose 2SN DN12, 450lg.	1	L2.2417
72	HD-Schlauch 2SN DN8, 750lg.	HD-hose 2SN DN8, 750lg.	2	L2.2418
73	HD-Schlauch 2SN DN8, 2400lg.	HD-hose 2SN DN8, 2400lg.	2	L2.2419
74	HD-Schlauch 2SN DN8, 800lg.	HD-hose 2SN DN8, 800lg.	1	L2.2420
75	HD-Schlauch 2SN DN8, 1150lg.	HD-hose 2SN DN8, 1150lg.	1	L2.2421
76	HD-Schlauch 2SN DN8, 2200lg.	HD-hose 2SN DN8, 2200lg.	1	L2.2422
77	HD-Schlauch 2SN DN8, 2550lg.	HD-hose 2SN DN8, 2550lg.	1	L2.2423
78	HD-Schlauch 2SN DN8, 2000lg.	HD-hose 2SN DN8, 2000lg.	2	L2.2532
80	Zylinderschraube M6x16 DIN 912	Cylinder head screw M6x16 DIN 912	33	H9.8291
81	Zylinderschraube M8x35 DIN 912	Cylinder head screw M8x35 DIN 912	114	L8.2206
82	Zylinderschraube M10x35 DIN 912	Cylinder head scr. M10x35 DIN912	80	L8.4160
83	Zylinderschraube M10x110 DIN 912	Cylinder head scr. M10x110 DIN912	4	L2.1042
84	Zylinderschraube M12x25 DIN 912	Cylinder head screw M12x25 DIN912	2	H8.8424
85	Zylinderschraube M12x130 DIN 912	Cylinder head scr. M12x130 DIN 912	2	L2.1579
87	Senkschraube M12x40 DIN 7991	Cylinder head scr. M12x40 DIN 7991	2	L2.1707
89	U-Scheibe A 6,4 DIN 125	Washer A 6,4 DIN 125	33	H9.8353
90	U-Scheibe A 10,5 DIN 125	Washer A 10,5 DIN 125	24	H9.8673
91	U-Scheibe A 13 DIN 125	Washer A 13 DIN 125	2	H8.8234
92	U-Scheibe B 13 DIN 125	Washer B 13 DIN 125	4	L2.2303
94	Sechskantmutter M10 DIN 985	Hexagon nut M10 DIN 985	8	H8.8506
95	Sechskantmutter M20x1,5 DIN 439	Hexagon nut M20x1,5 DIN 439	4	L8.1026
97	Stopfen G 1/2" A	Stopper G 1/2" A	4	L2.1985
99	T-Stutzen mit Dichtkegel	T-adapter	2	L8.0781
100	Sechskantmutter M16 DIN934	Hexagon nut M16 DIN934	4	H8.8185
101	Zylinderschraube M10x60 DIN 912	Cylinder head scr. M10x60 DIN 912	8	H8.8392
102	Zylinderschrauben M8x25 DIN912	Cylinder head screw M8x25 DIN912	16	H9.8262
103	U-Scheibe A8,4	Washer A8,4	16	H9.8671
104	Sechskantmutter M8	Hexagon nut M8	8	H9.8289
105	Sechskantschraube M10x70 DIN933	Hexagon screw M10x70 DIN933	4	H8.8070
106	Zylinderschraube M10x50 DIN 912	Cylinder head screw	4	L8.2809
107	Zylinderschrauben M10x40 DIN 912	Cylinder head screw	8	H8.8001
108	Federring A6	Circlip A6	33	L8.2057

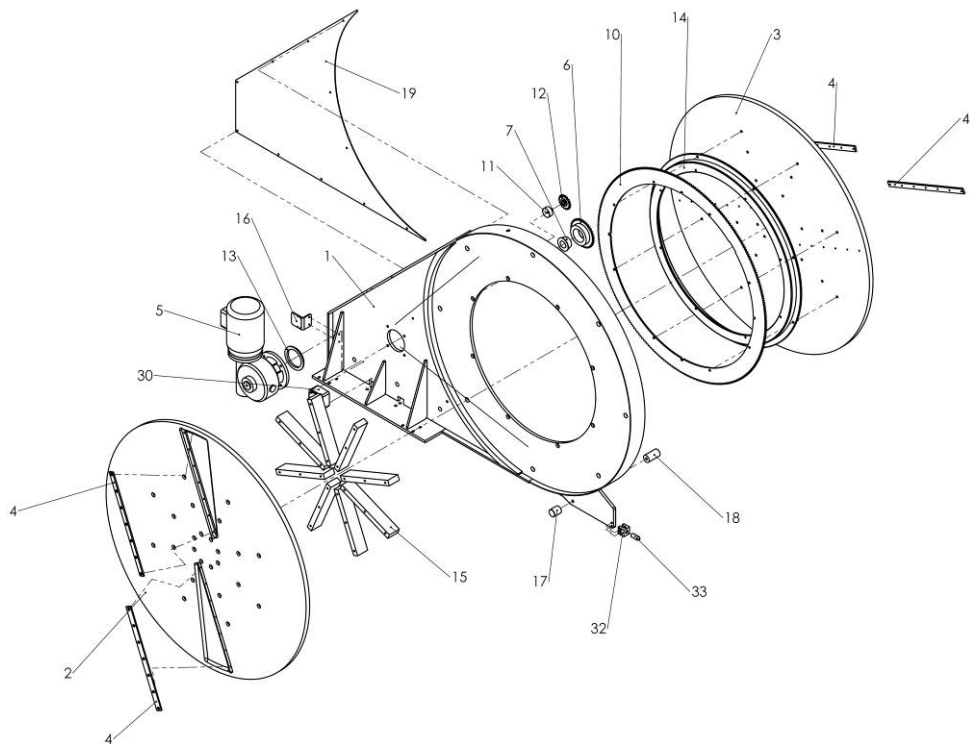
Support / support P1000W no. L2.2278-i2



Pos.	Bezeichnung	Description	qty.	Nr. /No.
1	Supportgestell	Support frame	1	L2.2161
2	Maschinenfuß	Mouting foot	6	L8.2518
4	Linearführung mit 2 Wagen	Linear guiding with 2 carriage	4	L2.2190
6	Motor zur Verstellung Fräser	Motor for trimmer unit	1	L2.2200
7	Motor zur Verstellung HE	Motor for heating element	1	L2.2199
8	Spannplatten	Clamping plate	4	L2.2201
9	Zahnriemen	Toothed belt	1	L2.2202
10	Zahnscheibe	Toothed lock washer	3	L2.2203
11	Zahnscheibe	Toothed lock washer	1	L2.2204
13	Motor-Platte f. Fräser	Motor table for trimmer	1	L2.2205
14	Motor-Platte f. HE	Motor table for heating element	1	L2.2206
15	Stellbock Motor	Adjusting rack motor	2	L2.2207
16	Justierschraube Fräser	Adjusting screw trimmer	1	L2.2208
17	Justierschraube HE	Adjusting screw heating element	1	L2.2209
19	Stehlager	Pedestal bearing	4	L2.2210
20	Justierplatte f. Stehlager	Adjusting plate for bearing	4	L2.2211
22	Bock-Zahnriemen	Rack toothed belt	2	L2.2212

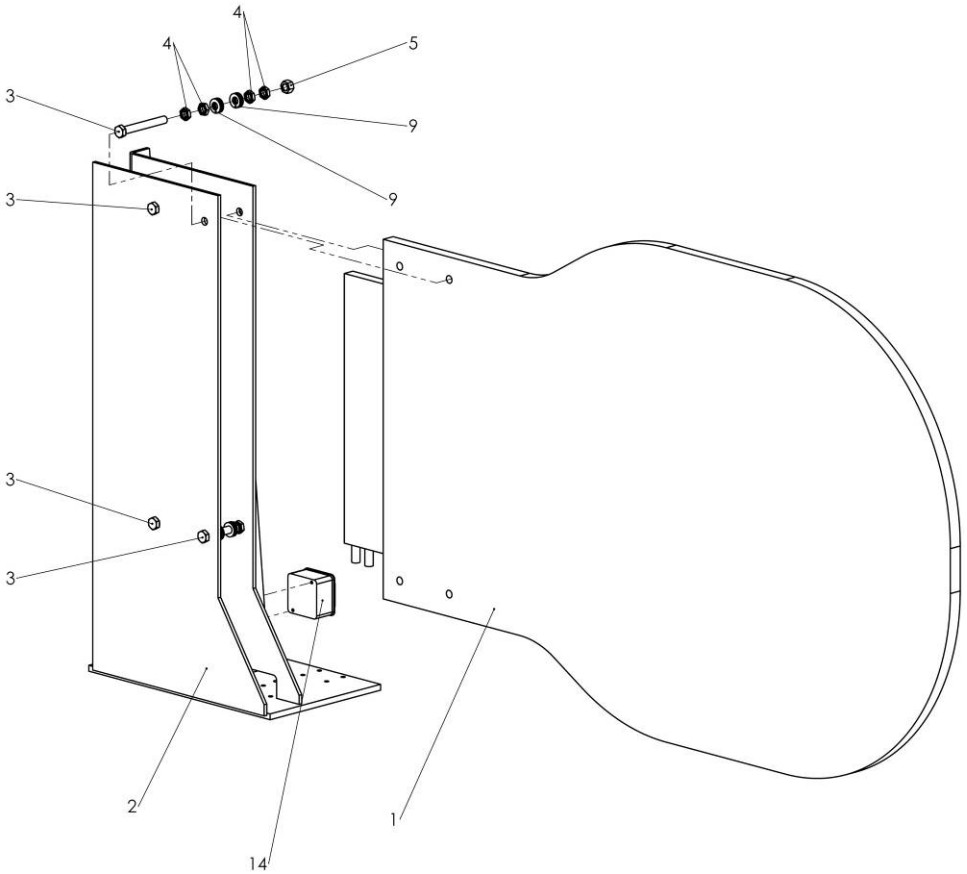
Pos.	Bezeichnung	Description	qty.	Nr. /No.
24	Passring für Verstellmotor HE	Adapter ring for heating element	1	L2.2274
25	Passring für Verstellmotor Fräser	Adapter ring for trimmer	1	L2.2275
27	Stopper Support	Stopper support	4	L2.2255
28	Abdeckung Support	Cover support	1	L2.2254
29	Kabelschacht	Cable duct	1	L2.1821
30	Deckel für Kabelschacht	Cover for cable duct	1	L2.1822
31	Halterung für Schaltschrank links	Retainer for cubicle left	1	L2.1823
32	Halterung für Schaltschrank rechts	Retainer for cubicle right	1	L2.1824E005
34	Abdeckblech für Schaltschrank	Cover sheet for control box	1	L2.2474
36	Betätigungsblech für Nahrungsschalter	Sheet metal	4	L2.2295
38	Energieführungskette (33 Kettenglieder)	Energy chain	2	L2.2249
39	Halter Energiekette f. HE	Retainer for energy chain	1	L2.2249E001
40	Halter Energiekette f. Fräser	Retainer for energy chain	1	L2.2249E002
43	Abstandsbuchse für HE Motor	Spacer bushing	1	L2.2257
44	Abstandsbuchse für Fräser Motor	Spacer bushing	1	L2.2258
45	Welle für Zahnscheibe Ø38	Shaft for toothed washer	2	L2.2260
47	HE Schutz	Cover for heating element	1	L2.2171
49	U-Scheibe Ø8,4-Ø45	Washer Ø8,4-Ø45	1	L2.2324E001
50	U-Scheibe Ø10,5-Ø45	Washer Ø10,5-Ø45	1	L2.2324E002
51	Zylinderschraube M5x12 DIN 912	Cylinder head screw M5x12 DIN 912	8	H9.8669
52	Zylinderschraube M5x60 DIN 912	Cylinder head screw M5x60 DIN 912	16	H8.8017
53	Zylinderschraube M6x16 DIN 912	Cylinder head screw M6x16 DIN 912	20	H9.8291
54	Zylinderschraube M6x25 DIN 912	Cylinder head screw M6x25 DIN 912	2	H9.8368
55	Zylinderschraube M8x10 DIN 912	Cylinder head screw M8x10 DIN 912	4	L2.2299
56	Zylinderschraube M8x20 DIN 912	Cylinder head screw M8x20 DIN 912	8	H8.8385
57	Zylinderschraube M8x35 DIN 912	Cylinder head screw M8x35 DIN 912	160	L8.2206
58	Zylinderschraube M12x40 DIN 912	Cylinder head scr. M12x40 DIN 912	8	L2.2296
60	Senkschraube M5x10 DIN 7991	Countersunk screw M5x10 DIN 7991	4	L2.2300
61	Senkschraube M6x10 DIN 7991	Countersunk screw M6x10 DIN 7991	8	H8.8172
62	Senkschraube M6x35 DIN 7991	Countersunk screw M6x35 DIN 7991	2	L2.2301
64	Senkschraube M10x35 DIN 7991	Countersunk scr. M10x35 DIN 7991	8	L2.2113
65	Senkschraube M10x30 DIN 7991	Countersunk scr. M10x30 DIN 7991	4	L8.1296
66	Sechskantschraube M12x40 DIN 933	Hexagon screw M12x40 DIN 933	4	L8.4005
67	Sechskantschraube M12x110 DIN 933	Hexagon screw M12x110 DIN 933	5	L2.2302
69	U-Scheibe A 6,4 DIN 125	Washer A 6,4 DIN 125	12	H9.8353
70	U-Scheibe A 10,5 DIN 125	Washer A 10,5 DIN 125	8	H9.8673
71	U-Scheibe A 13 DIN 125	Washer A 13 DIN 125	26	H8.8234
73	Sechskantmutter M6 DIN 980	Hexagon nut M6 DIN 980	14	L2.2277
74	Sechskantmutter M12 DIN 980	Hexagon nut M12 DIN 980	9	L9.0428
76	Gewindestift M6x25 DIN 915	Set screw M6x25 DIN 915	4	L2.2298
79	Sicherungsring DIN471 38x1,75	Circlip DIN471 38x1,75	4	L2.2330
80	Passfeder A10x8x28 DIN 6885	Parallel key A10x8x28 DIN 6885	2	L2.2380
82	Abdeckblech für Support vorn	Cover sheet for support in front	1	L2.2430
83	Abdeckblech für Support hinten	Cover sheet for support rear	1	L2.2475
84	Abdeckblech für Support hinten	Cover sheet for support rear	1	L2.2476
86	U-Scheibe A8,4	Washer A8,4	44	H9.8671
87	Zylinderschrauben M10x35 DIN 912	Cylinder head scr. M10x35 DIN 912	2	H8.8402
88	Sicherungsmutter M10 DIN 985	Locking nut M10 DIN 985	8	H8.8506
89	Zylinderschraube M8x25 DIN 912	Cylinder head screw M8x25 DIN 912	32	H9.8262
90	Sechskantschraube M12x20 DIN 933	Hexagon screw M12x20 DIN 933	8	H8.8472
91	Sechskantmutter M8	Hexagon nut M8	4	H9.8289

Fräseinrichtung / trimmer unit P1000W no. L2.2101-i2



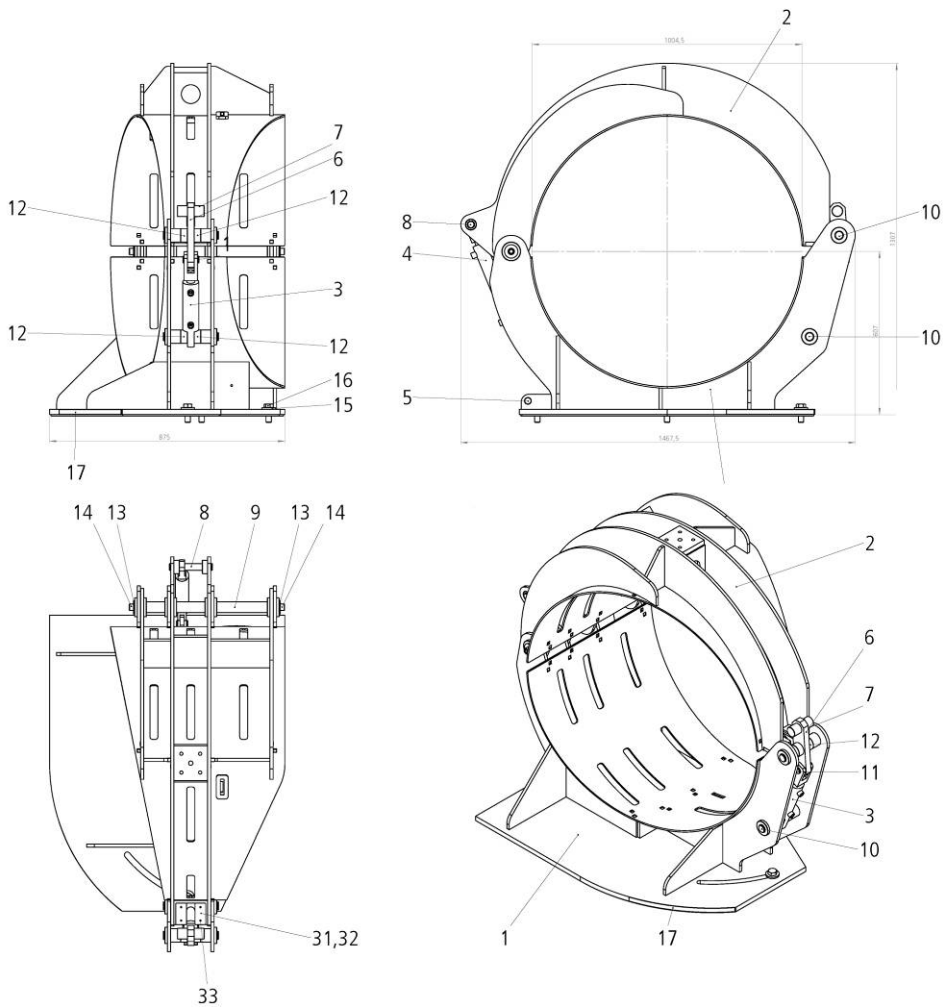
Pos.	Bezeichnung	Description	qty.	Nr. /No.
1	Fräsergehäuse	Trimmer housing	1	L2.2102
2	Hobelscheibe links	Trimmer disc left	1	L2.2266
3	Hobelscheibe rechts	Trimmer disc right	1	L2.2265
4	Hobelmesser	Plane blade	4	L2.2271
5	Schneckengetriebemotor MI90SDR20:1	Gear motor	1	L2.1525
6	Kettenrad 38 Zähne 08B-1-57	Chain wheel 38 toothes	1	L2.2137
7	Taperbuchse 2012-38	Taper bushing 2012-38	1	L2.1527
8	einfach Rollenkette 5000lg.	Roller chain 5000lg	1	L2.1528
9	Kettenschloss	Chain lock	1	L8.5607
10	Kettenrad 290 Zähne	Roller chain 290 toothes	1	L2.2281
11	Bolzen für Kettenspanner	Bolt for chain vise	1	L2.1977
12	Kettenspannrad	Chain vise wheel	1	L2.1545
13	Zentrierscheibe	Centering washer	1	L2.1775
14	Lenkkranz Typ 16L/1050	Turntable typ 16L/1050	1	L2.2198
15	Abstandshalter für Hobelscheiben	Spacer for trimmer disc	8	L2.2282
16	Halter Energiekette f. Fräser	Retainer energy chain for trimmer	1	L2.2249E003
17	Anschlag links	Stopp left	1	L2.2279
18	Anschlag rechts	Stopp right	1	L2.2280
19	Deckel	Cover	1	L2.2284
20	Senkschraube mit Innensechskant M10x45	Countersunk screw M10x45	8	L2.2288
21	Selbstsichernde Sechskantmutter M10	Hexagon nut M10	17	L8.4047
22	U-Scheibe A10,5	Washer A10,5	14	L8.2568
23	Senkschraube mit Innensechskant M10x40	Countersunk screw M10x40	48	L2.2289
24	U-Scheibe D6,4	Washer D6,4	11	H9.8353
25	Senkschraube mit Innensechskant M10x25	Countersunk screw M10x25	8	L2.2290
26	Sechskantschraube M10x40	Hexagon screw M10x40	9	H8.8461
27	Senkkopfschrauben M6x20	Countersunk screw M6x20	28	H8.8172
28	Zylinderschraube M6x12	Cylinder head screw M6x12	11	H8.8388
29	Sechskantschraube M10x30	Hexagon screw M10x30	1	L8.2558
30	Gehäuse	Housing	1	L2.2252
32	Positionierer f. Fräser	Positioner for trimmer	1	L2.2262
33	Positionierwelle f. Fräser	Positioner shaft for trimmer	1	L2.2261

Heizelement / heating element P1000W no. L2.2104-i1



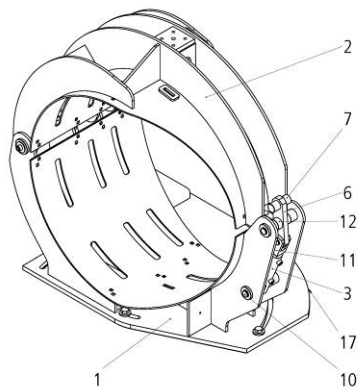
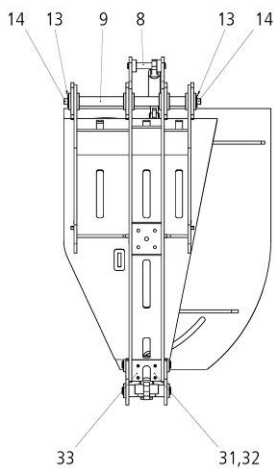
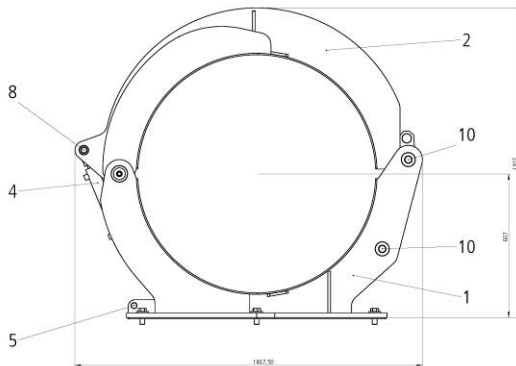
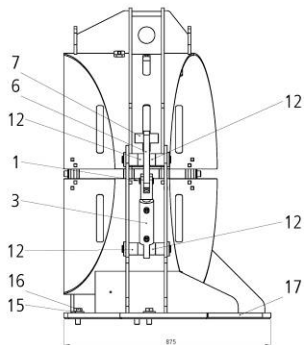
Pos.	Bezeichnung	Description	qty.	Nr. /No.
1	Heizplatte	Heating plate	1	L2.2100
2	Heizelementhalter	Heating element support	1	L2.2103
3	Sechskantschraube M16x130	Hexagon screw M16x130	4	L2.2292
4	Niedrige Sechskantmutter M16	Hexagon nut M16	16	L2.2294
5	Selbstsichernde Sechskantmutter M16	Hexagon nut M16	4	L2.2291
6	Scheibe A 17	Washer A17	8	H8.8233
7	Sechskantschraube M8x25	Hexagon nut M8x25	16	H8.8445
8	Scheibe A 8,4	Washer A 8,4	16	H9.8671
9	Tellerfeder Ø31,5x16,3x1,25	Spring washer Ø31,5x16,3x1,25	40	L2.2293
14	Gehäuse	Housing	1	L2.2252

Grundspannelement links/ basic clamping element left P1000W no. L2.2105-i1



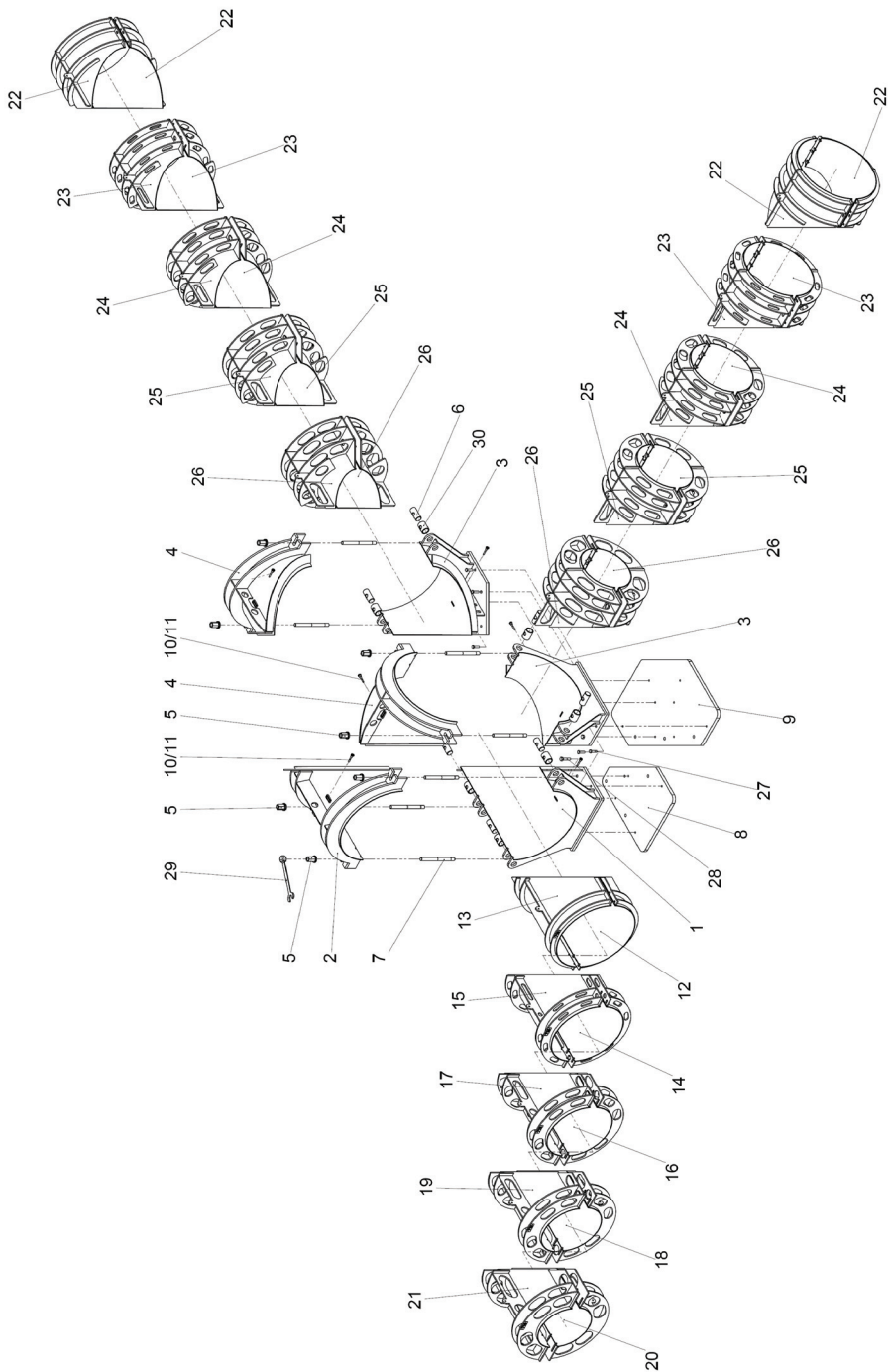
Pos.	Bezeichnung	Description	qty.	Nr. /No.
1	Grundspannelement Unterteil links	Clamping element sub frame left	1	L2.2106
2	Grundspannelement Oberteil links	Clamping element upper part left	1	L2.2107
3	Spann- Hydraulikzylinder	Hydraulic cylinder	1	L2.2139
4	Hydraulikzylinder	Hydraulic cylinder	1	L2.2140
5	Bolzen	Bolt	1	L2.2145
6	Hebel	Lever	1	L2.2256
7	Welle	Shaft	1	L2.2259
8	Bolzen	Bolt	1	L2.2148
9	Bolzen	Bolt	1	L2.2149
10	Bolzen	Bolt	2	L2.2150
11	Bolzen	Bolt	1	L2.2151
12	Distanzbuchse	Spacer bushing	4	L2.2152
13	Scheibe A17	Washer A17	2	L2.2153
14	Zylinderschraube M16x30	Cylinder head screw M16x30	2	L2.2154
15	Scheibe 21	Washer 21	3	L2.2155
16	Sechskantschraube M20x55	Hexagon screw M20x55	3	L2.2156
17	Winkelskala	Angle scale	1	L2.2157
18	Gerader Einschraubstutzen	Threaded bushing straight	4	L2.1093
19	Hydraulikschlauch	Hydraulic hose	1	L2.2396
20	Hydraulikschlauch	Hydraulic hose	1	L2.2397
21	Hydraulikschlauch	Hydraulic hose	2	L2.2398
23	Kupplung Muffen	Quick connector socket	2	L8.2351
24	Kupplung Stecker	Quick connector plug	2	L8.2369
26	Steckbolzen	Locking pin	2	L2.2267
27	Kugelschleife	Bead chain	2	L2.2268
28	Ringschraube M16	Ring bolt M16	1	L8.1507
29	Staubschutz für Schraubmuffe Gr.3	Dust protection for connector socket	2	L2.2448
30	Staubschutz für Schraubstecker Gr.3	Dust protection for connector plug	2	L2.2449
31	Unterlegplatte mit Gewinde	Spacer with thread	2	L2.2459
32	Unterlegplatte mit Bohrung	Spacer with bore	2	L2.2460
33	Zylinderschraube M6x40	Cylinder screw M6x40	4	L8.1357
34	Sicherungsring Ø25	Circlip Ø25	6	H9.8197
35	Sicherungsring Ø30	Circlip Ø30	4	L8.4451
36	Gewindestift M 8x12 DIN 913	Set screw M 8x12 DIN 913	1	L8.0258

Grundspannelement rechts / basic clamping element right P1000W no. L2.2108-i1



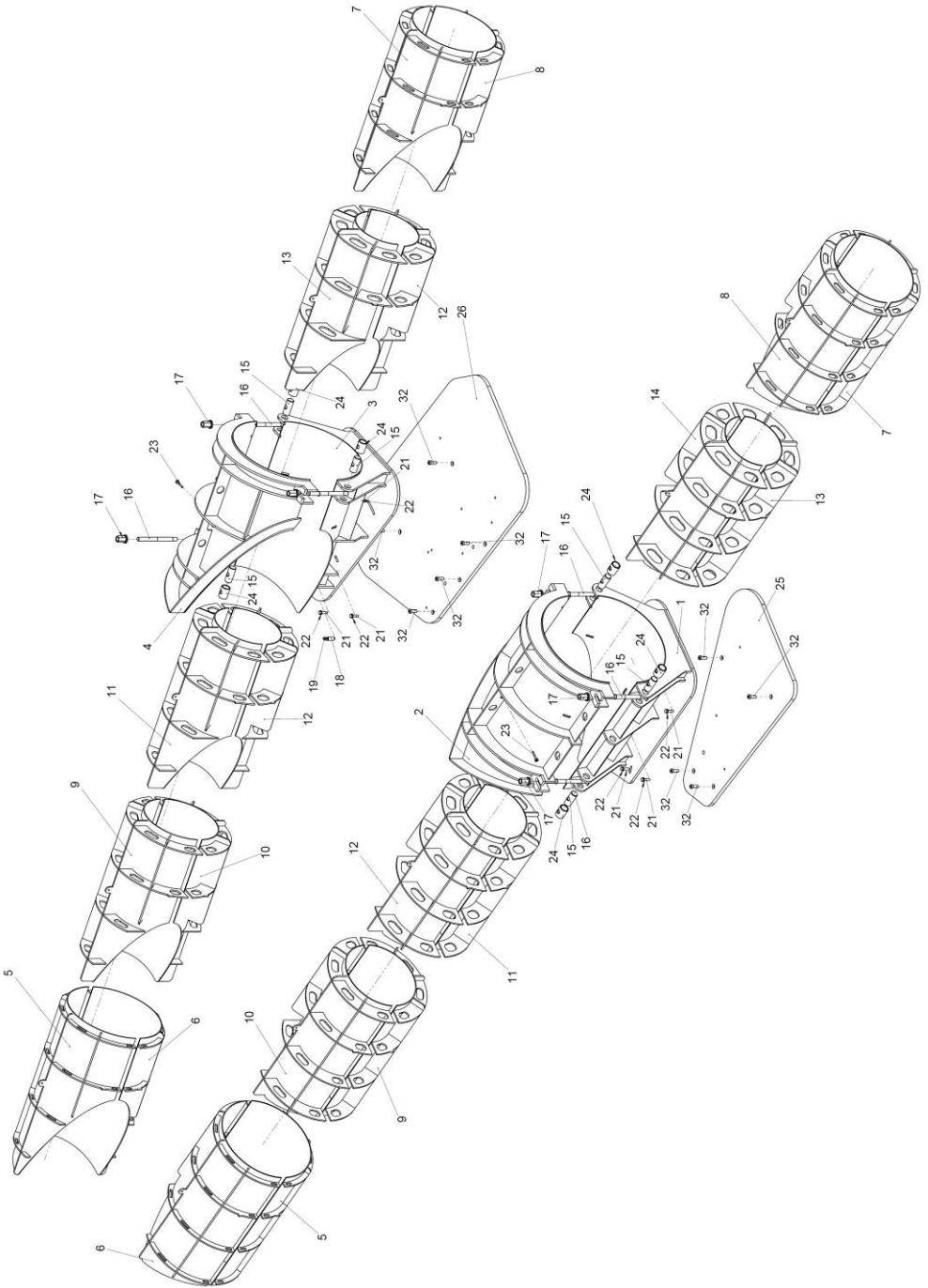
Pos.	Bezeichnung	Description	qty.	Nr. /No.
1	Grundspannelement Unterteil rechts	Clamping element sub frame right	1	L2.2109
2	Grundspannelement Oberteil rechts	Clamping element upper part right	1	L2.2110
3	Spann- Hydraulikzylinder	Hydraulic cylinder	1	L2.2139
4	Hydraulikzylinder	Hydraulic cylinder	1	L2.2140
5	Bolzen	Bolt	1	L2.2145
6	Hebel	Lever	1	L2.2256
7	Welle	Shaft	1	L2.2259
8	Bolzen	Bolt	1	L2.2148
9	Bolzen	Bolt	1	L2.2149
10	Bolzen	Bolt	2	L2.2150
11	Bolzen	Bolt	1	L2.2151
12	Distanzbuchse	Spacer bushing	4	L2.2152
13	Scheibe A17	Washer A17	2	L2.2153
14	Zylinderschraube M16x30	Cylinder head screw M16x30	2	L2.2154
15	Scheibe 21	Washer 21	3	L2.2155
16	Sechskantschraube M20x55	Hexagon screw M20x55	3	L2.2156
17	Winkelskala	Angle scale	1	L2.2157
18	Gerader Einschraubstutzen	Threaded bushing straight	4	L2.1093
19	Hydraulikschlauch	Hydraulic hose	1	L2.2396
20	Hydraulikschlauch	Hydraulic hose	1	L2.2397
21	Hydraulikschlauch	Hydraulic hose	2	L2.2398
23	Kupplung Muffen	Quick connector socket	2	L8.2351
24	Kupplung Stecker	Quick connector plug	2	L8.2369
26	Steckbolzen	Locking pin	2	L2.2267
27	Kugelschraube	Bead chain	2	L2.2268
28	Ringschraube M16	Ring bolt M16	1	L8.1507
29	Staubschutz für Schraubmuffe Gr.3	Dust protection for connector socket	2	L2.2448
30	Staubschutz für Schraubstecker Gr.3	Dust protection for connector plug	2	L2.2449
31	Unterlegplatte mit Gewinde	Spacer with thread	2	L2.2459
32	Unterlegplatte mit Bohrung	Spacer with bore	2	L2.2460
33	Zylinderschraube M6x40	Cylinder screw M6x40	4	L8.1357
34	Sicherungsring Ø25	Circlip Ø25	6	H9.8197
35	Sicherungsring Ø30	Circlip Ø30	4	L8.4451
36	Gewindestift M 8x12 DIN 913	Set screw M 8x12 DIN 913	1	L8.0258

T-Stückspannvorrichtung / T-clamping device P1000W no. 5.3976-i2



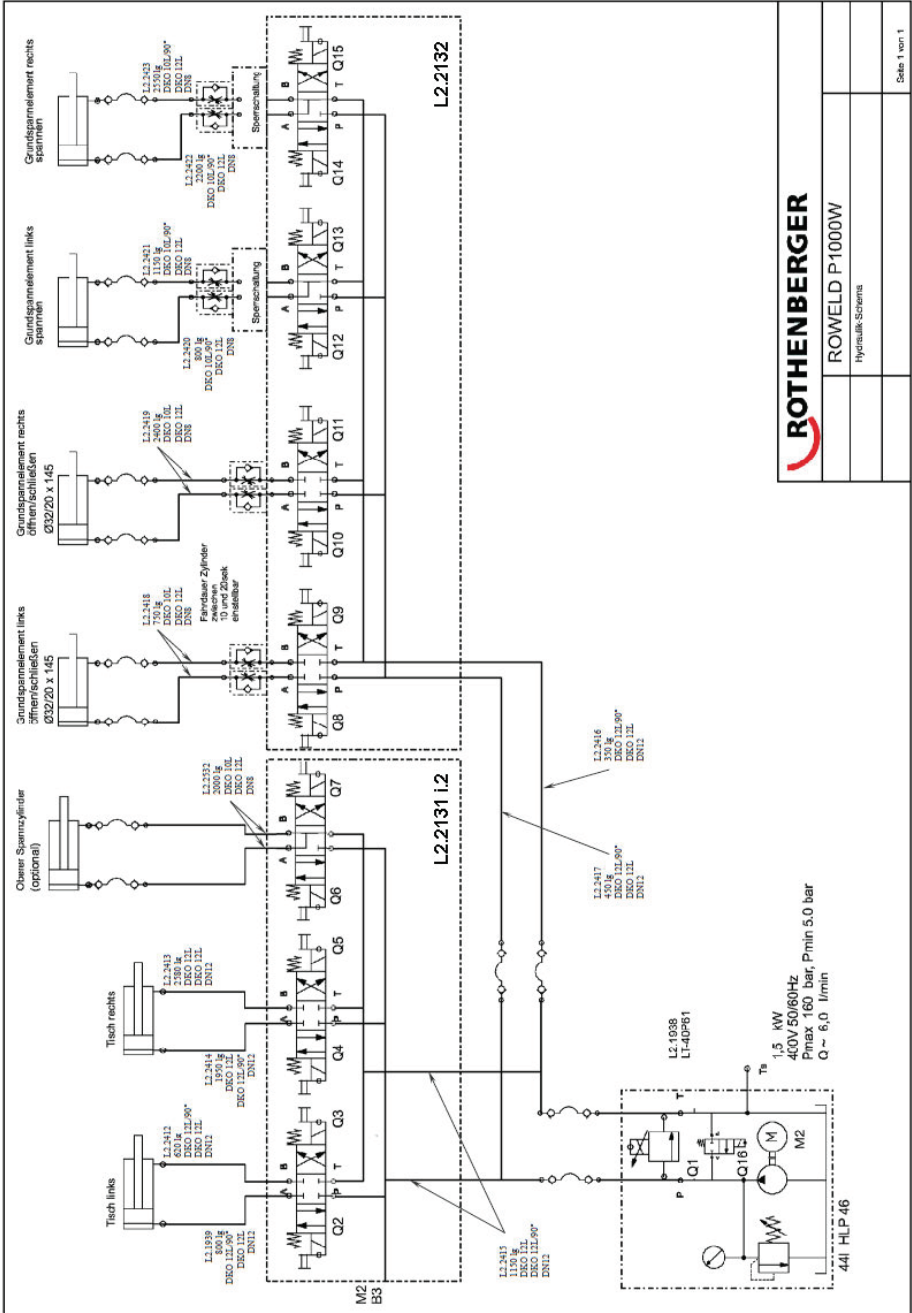
Pos.	Bezeichnung	Description	qty.	Nr. /No.
1	Grundspannelement unten schräg	Clamping element sub frame beveled	1	L2.2111
2	Grundspannelement oben schräg	Clamping element upper part beveled	1	L2.2112
3	Grundspannelement unten spitz	Clamping element sub frame pointed	2	L2.2134
4	Grundspannelement oben spitz	Clamping element upper part pointed	2	L2.2133
5	Messingmutter mit Scheibe	Brass nut with washer	7	L2.1566
6	Gelenkbolzen	Hinge bolt	7	L2.1567
7	Stehbolzen	Stud bolt	7	L2.1568
8	Zwischenplatte für T-Stück schräg	Intermediate plate for T-piece beveled	1	L2.2177
9	Zwischenplatte für T-Stück spitz	Intermediate plate for T-piece pointed	1	L2.2176
10	Steckbolzen	Locking pin	6	L2.2267
11	Kugelkette	Bead chain	6	L2.2268
12	T-Reduzierung unten schräg	T-reduction sub frame beveled	1	L2.2120
13	T-Reduzierung oben schräg	T-reduction upper part bevelled	1	L2.2121
14	T-Reduzierung unten schräg	T-reduction sub frame beveled	1	L2.2122
15	T-Reduzierung oben schräg	T-reduction upper part beveled	1	L2.2123
16	T-Reduzierung unten schräg	T-reduction sub frame beveled	1	L2.2124
17	T-Reduzierung oben schräg	T-reduction upper part beveled	1	L2.2125
18	T-Reduzierung unten schräg	T-reduction sub frame beveled	1	L2.2126
19	T-Reduzierung oben schräg	T-reduction upper part beveled	1	L2.2127
20	T-Reduzierung unten schräg	T-reduction sub frame beveled	1	L2.2128
21	T-Reduzierung oben schräg	T-reduction upper part beveled	1	L2.2129
22	T-Reduzierung spitz	T-reduction pointed	4	L2.2193
23	T-Reduzierung spitz	T-reduction pointed	4	L2.2194
24	T-Reduzierung spitz	T-reduction pointed	4	L2.2195
25	T-Reduzierung spitz	T-reduction pointed	4	L2.2196
26	T-Reduzierung spitz	T-reduction pointed	4	L2.2197
27	Sechskantschraube M16x55 DIN 933	Hexagon screw M16x55 DIN 933	12	L2.2269
28	Sechskantschraube M20x85 DIN 933	Hexagon screw M20x85 DIN 933	6	L2.2270
29	Ring-Maulschlüssel SW 41	Combination wrench SW41	1	L2.1632
30	Distanzbuchse	Distance bushing	7	L2.2326
31	Transportkiste	Transport case	1	L2.2435
32	Palette 800x1200	Stillage 800x1200	6	L2.2437

Y-Spannelemente / Y-clamping element P1000W no. 5.3977-i1



Pos.	Bezeichnung	Description	qty.	Nr. /No.
1	Y-Grundspannelement links unten	Y-clamping element left lower part	1	L2.2310
2	Y-Grundspannelement links oben	Y-clamping element left upper part	1	L2.2311
3	Y-Grundspannelement rechts unten	Y-clamping element right lower part	1	L2.2312
4	Y-Grundspannelement rechts oben	Y-clamping element right upper part	1	L2.2313
5	Y-Reduzierung 800-710 links unten	Y-reduction 800-710 left lower part	2	L2.2314
6	Y-Reduzierung 800-710 rechts unten	Y- reduction 800-710 right lower part	2	L2.2315
7	Y-Reduzierung 800-630 links unten	Y- reduction 800-630 left lower part	2	L2.2316
8	Y-Reduzierung 800-630 rechts unten	Y- reduction 800-630 right lower part	2	L2.2317
9	Y-Reduzierung 800-560 links unten	Y- reduction 800-560 left lower part	2	L2.2318
10	Y-Reduzierung 800-560 rechts unten	Y- reduction 800-560 right lower part	2	L2.2319
11	Y-Reduzierung 800-500 links unten	Y- reduction 800-500 left lower part	2	L2.2320
12	Y-Reduzierung 800-500 rechts unten	Y- reduction 800-500 right lower part	2	L2.2321
13	Y-Reduzierung 800-450 links unten	Y- reduction 800-450 left lower part	2	L2.2322
14	Y-Reduzierung 800-450 rechts unten	Y- reduction 800-450 right lower part	2	L2.2323
15	Gelenkbolzen	Hinge bolt	6	L2.1567
16	Stehbolzen	Stud bolt	6	L2.1568
17	Messingmutter mit Scheibe	Brass nut with washer	6	L2.1566
18	Drehbolzen	Pintle	2	L2.2331
19	Ringschraube	Ring bolt M8 DIN 580	2	L2.2230
20	Kugelkette	Bead chain	6	L2.2268
21	Sechskantschraube M16x55 DIN 933	Hexagon screw M16x55 DIN 933	6	L2.2269
22	Scheibe A17 DIN 125-St	Washer A17 DIN 125-St	6	L8.2569
23	Steckbolzen	Locking pin	4	L2.2267
24	Distanzbuchse	Distance bushing	6	L2.2326
25	Grundplatte klein	Base plate little	1	L2.2272
26	Grundplatte groß	Base plate big	1	L2.2273
27	Reduzierung 500-1000 - lin.unt/re.ob.	Reduction 500-1000 – left low./re.top	1	L2.2338
28	Reduzierung 450-1000 - lin.unt/re.ob.	Reduction 450-1000 – left low./re.top.	1	L2.2339
29	Reduzierung 500-1000 - li.ob./re.unt.	Reduction 500-1000 – left top/re.low.	1	L2.2340
30	Reduzierung 450-1000 - li.ob./re.unt.	Reduction 450-1000 – left top/re.low.	1	L2.2341
32	Zylinderschraube M20x50 DIN 7984	Cylinder head screw M20x50 DIN 7984	9	L2.2381
33	Ringschraube M16	Ring bolt M16	4	L8.1507
35	Transportkiste	Transport case	1	L2.2436
36	Palette 1000x1200	Stillage 1000x1200	1	L2.2438
37	Palette 800x1200	Stillage 800x1200	6	L2.2437

Hydraulikschaltplan / hydraulic diagram

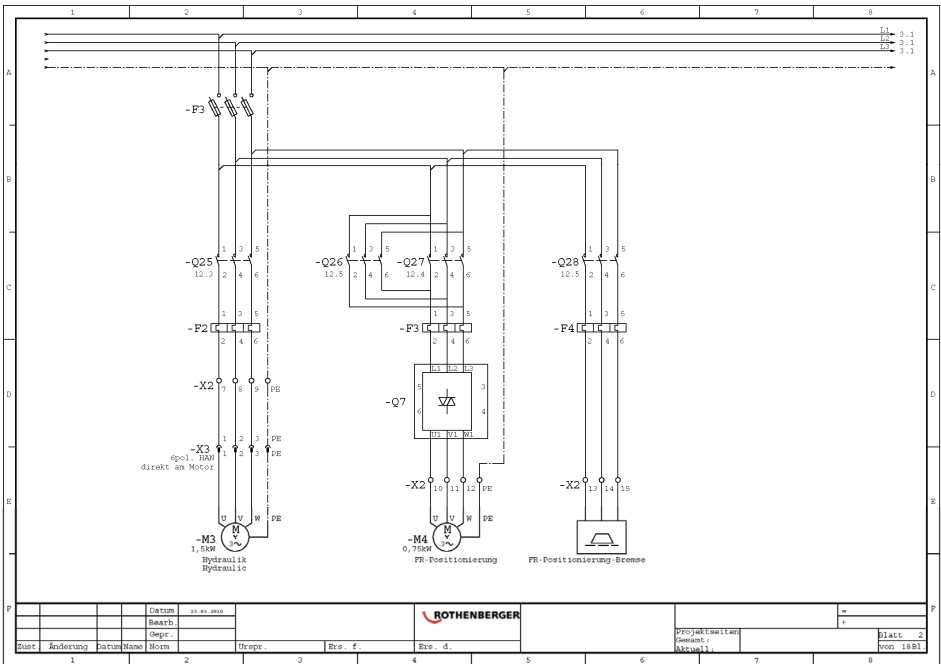
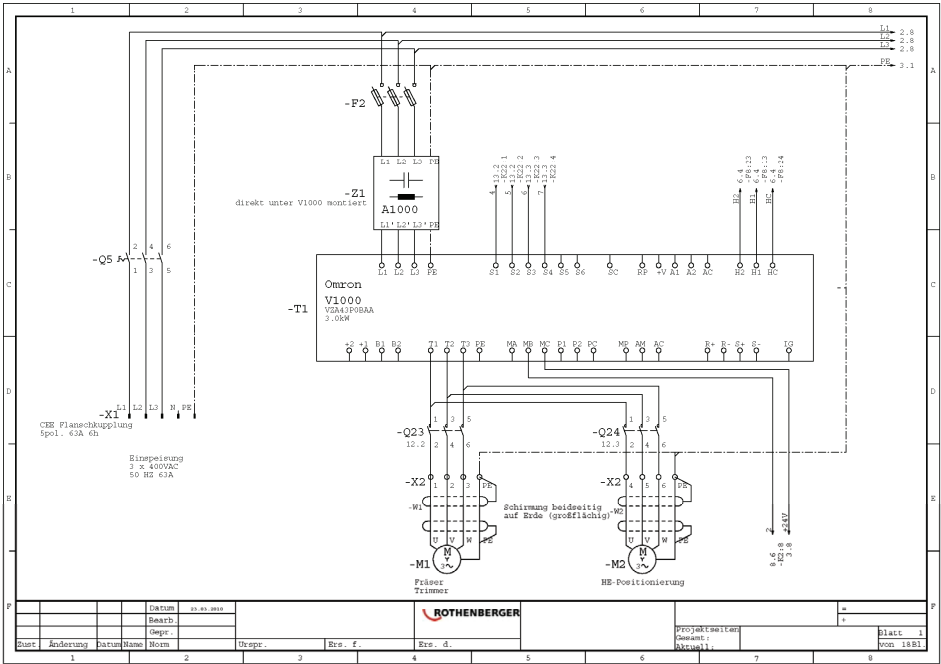


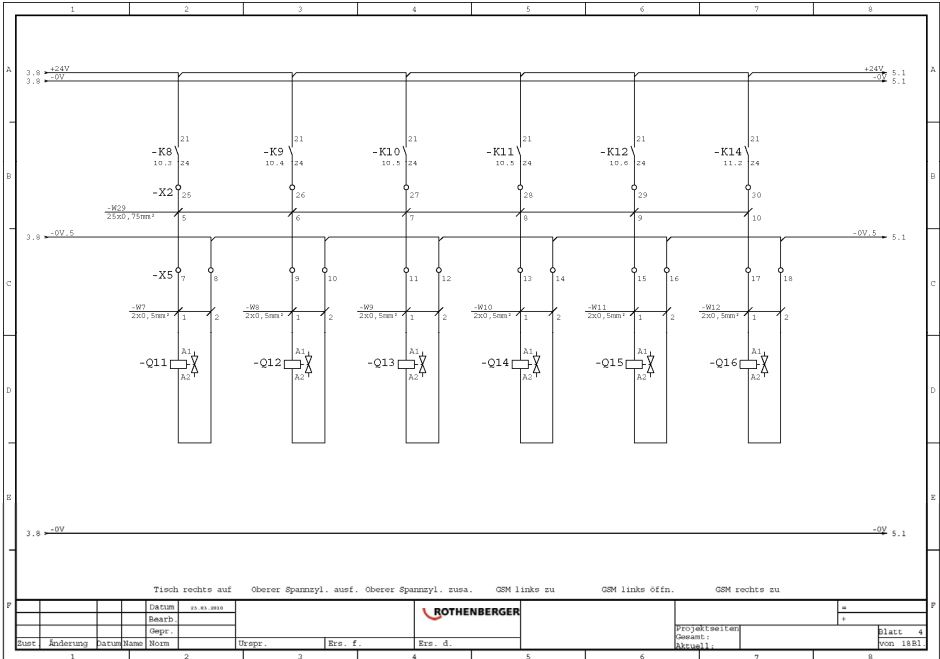
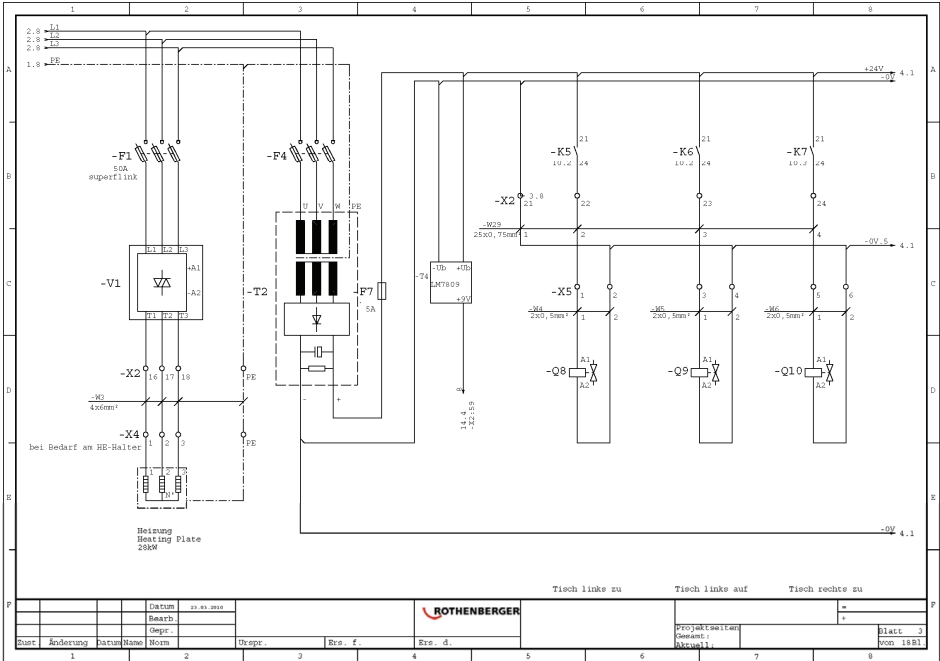
ROWELD P1000W

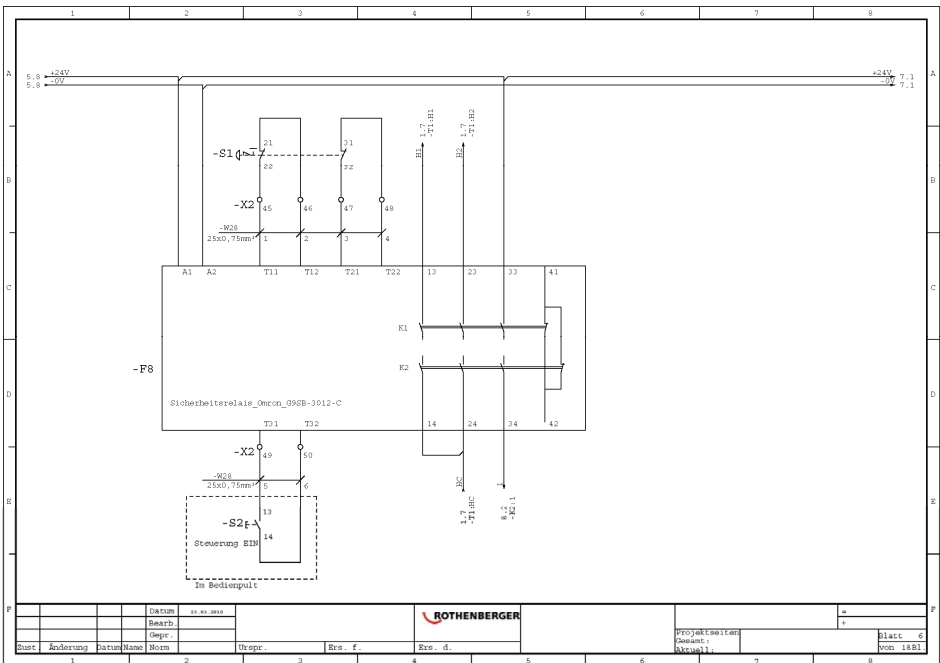
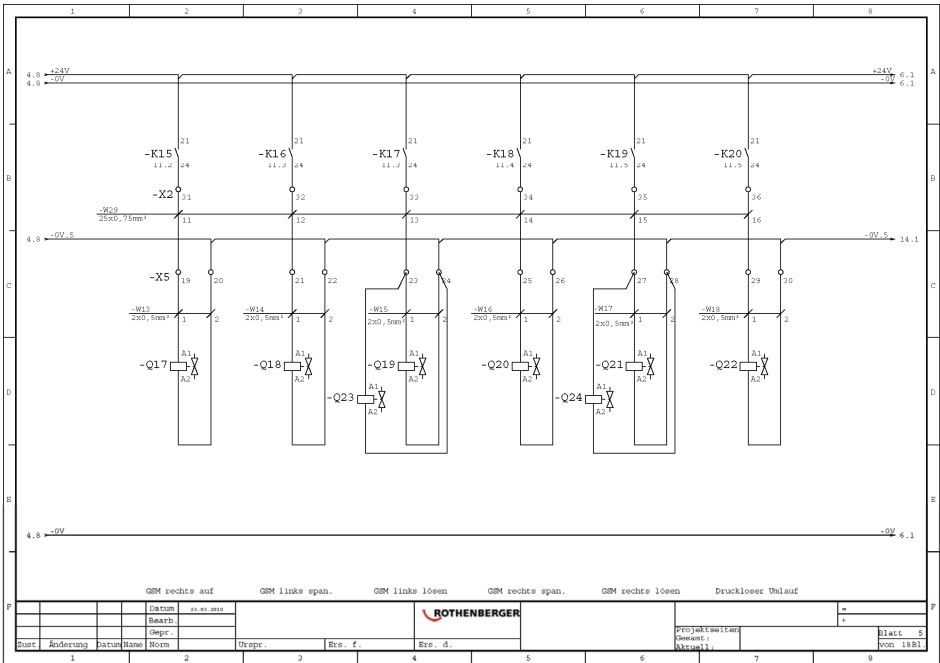
Hydraulik Schema

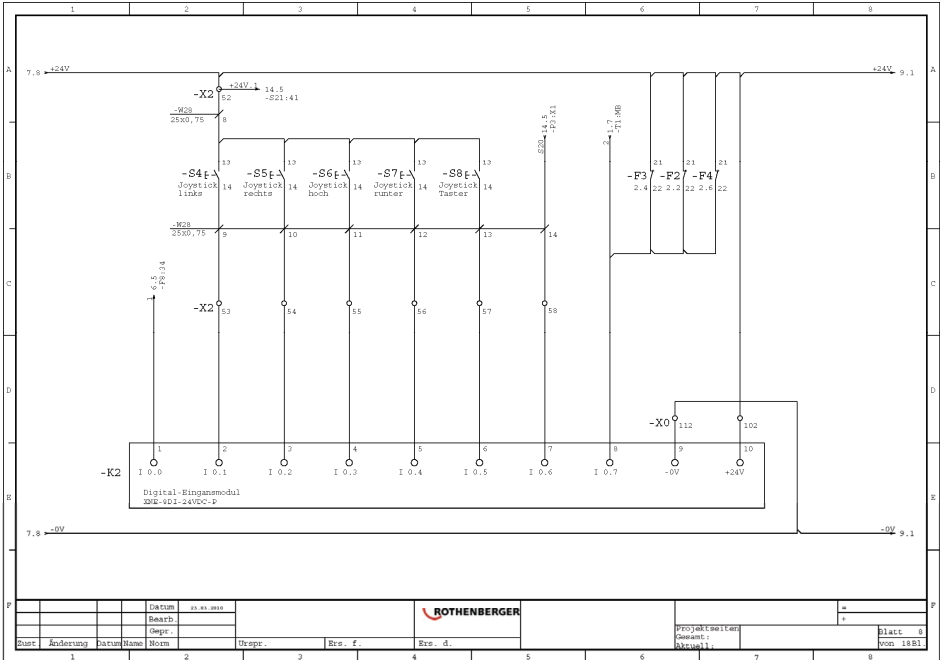
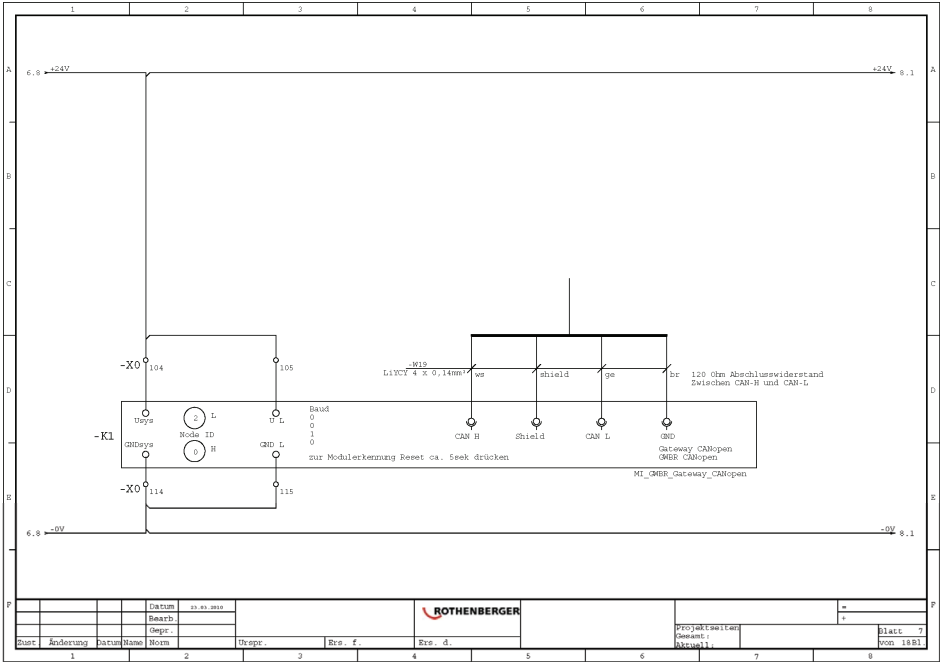
Scale 1:1

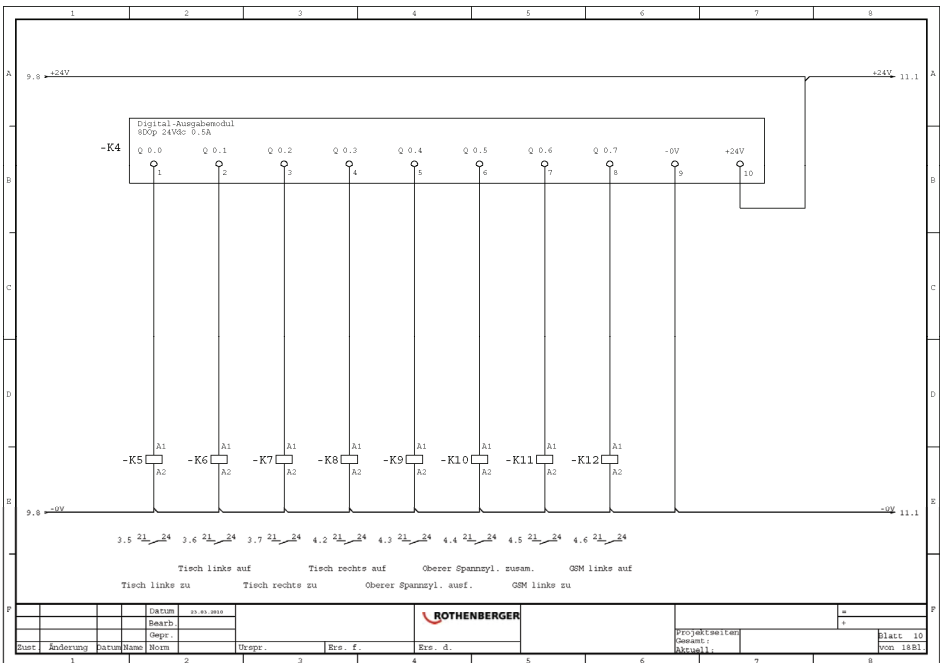
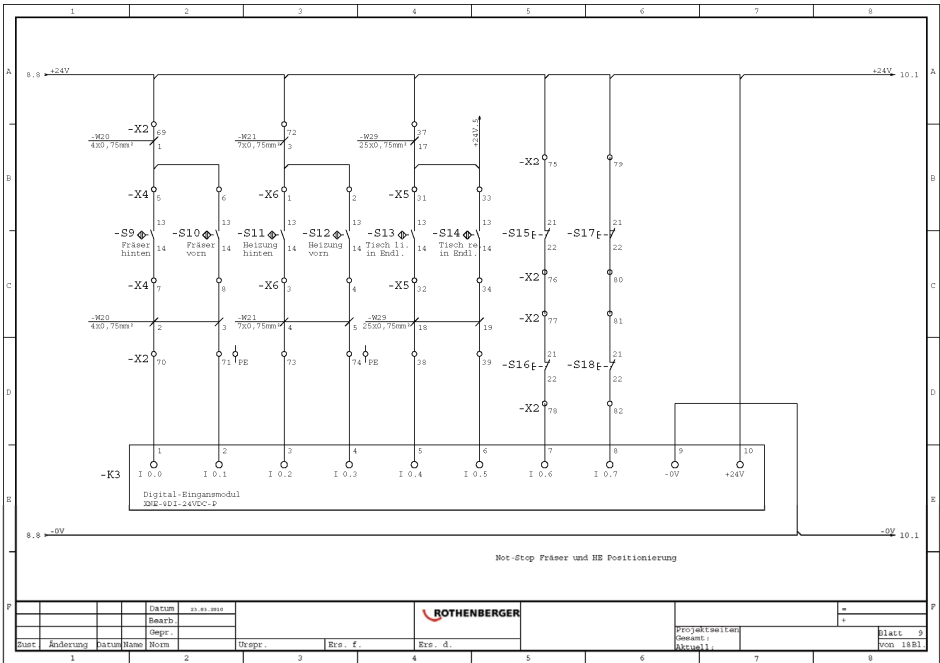
Schaltplan / wiring diagram

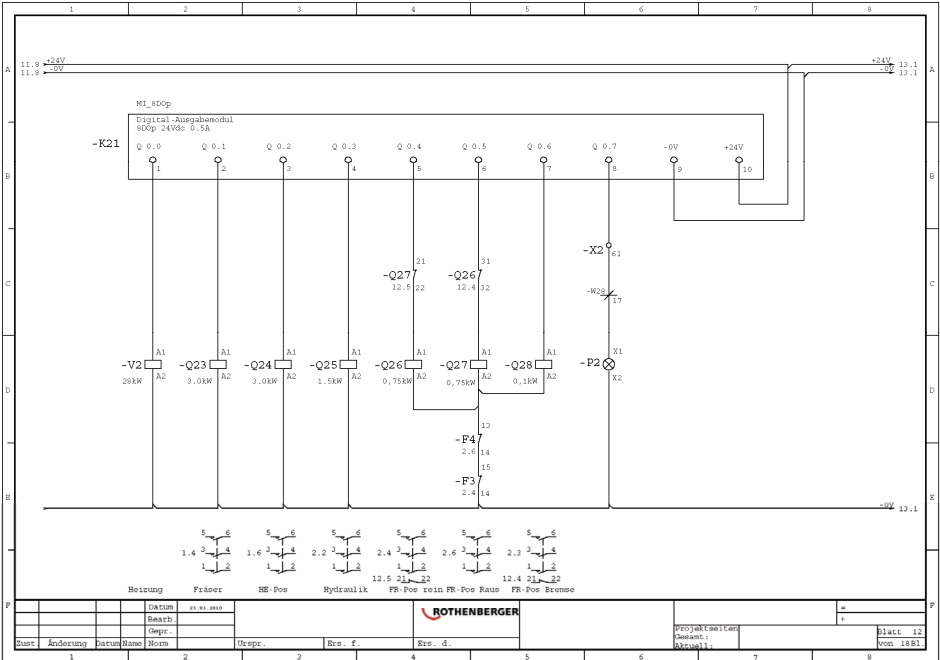
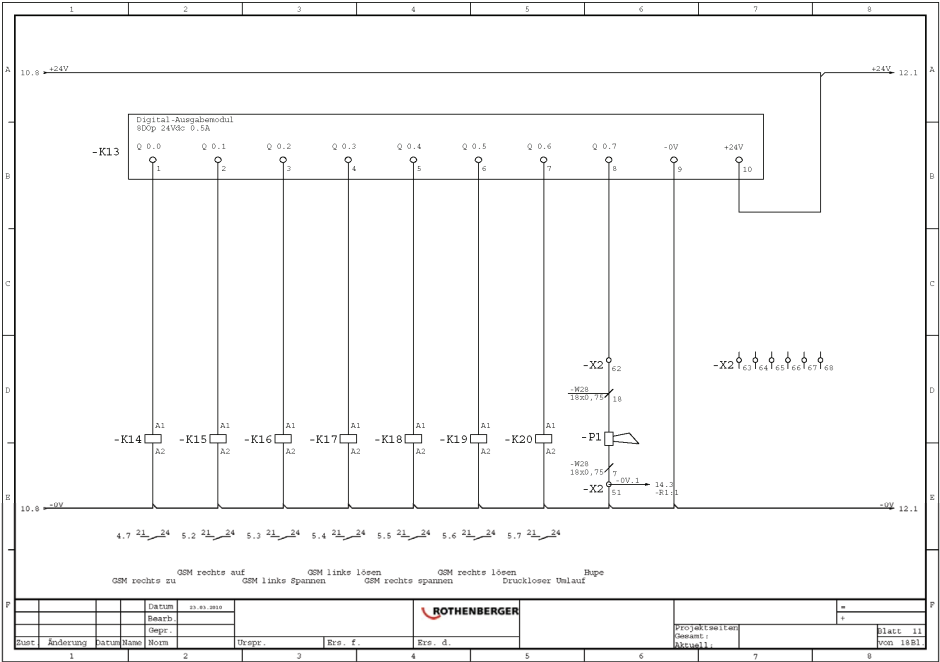


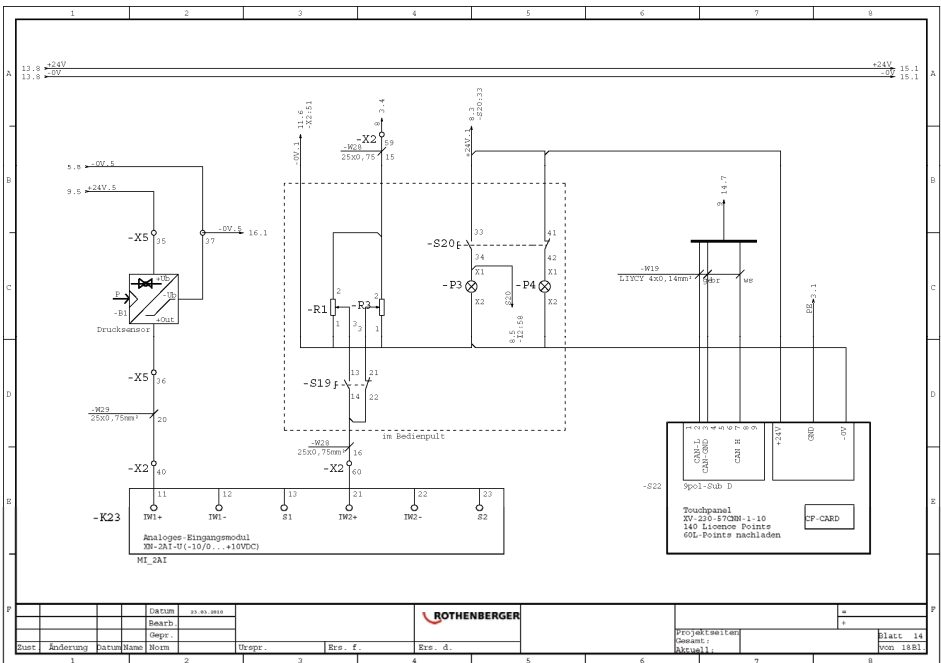
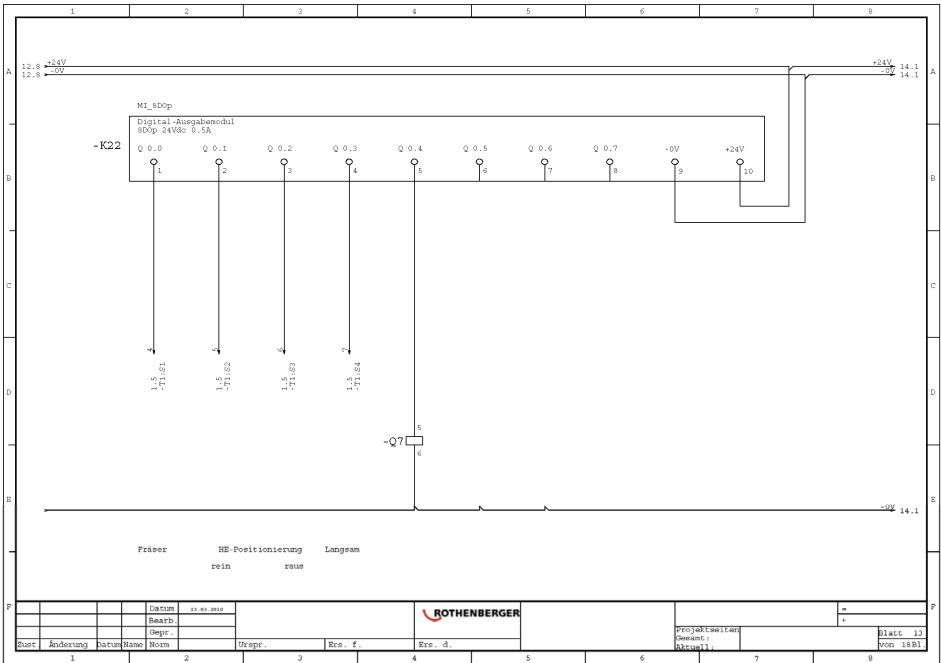


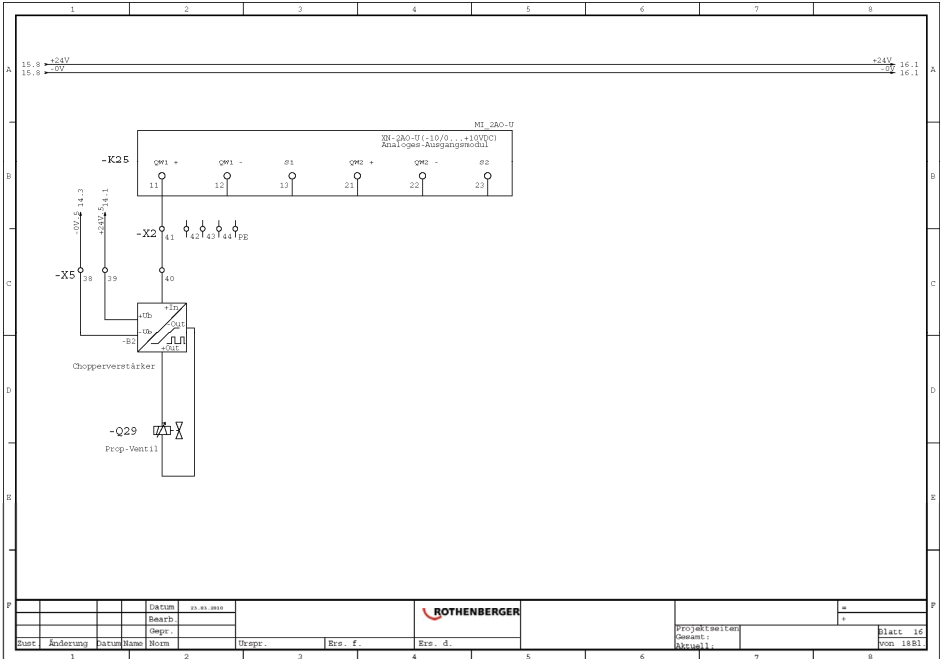
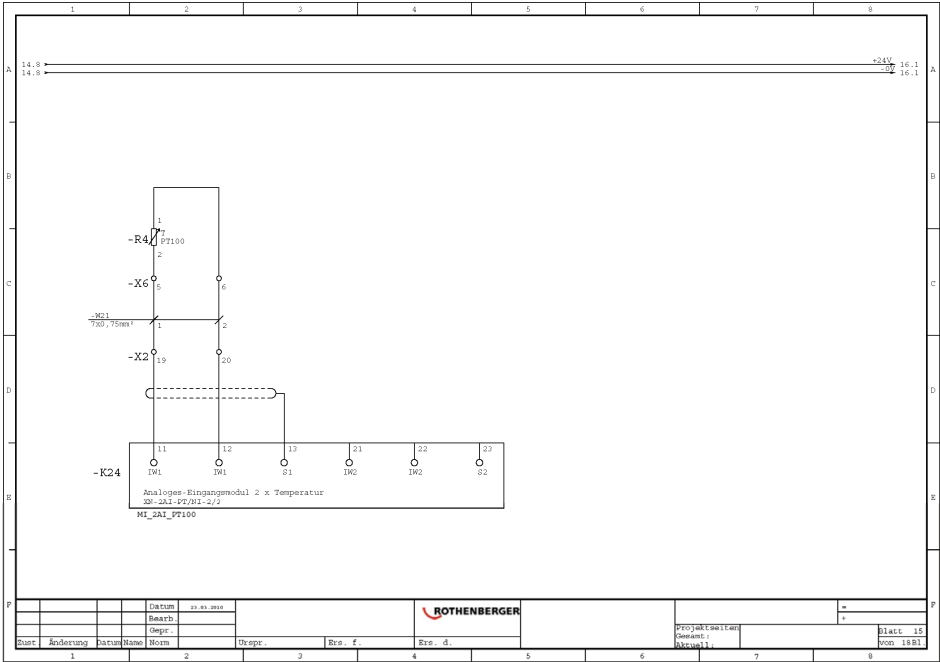















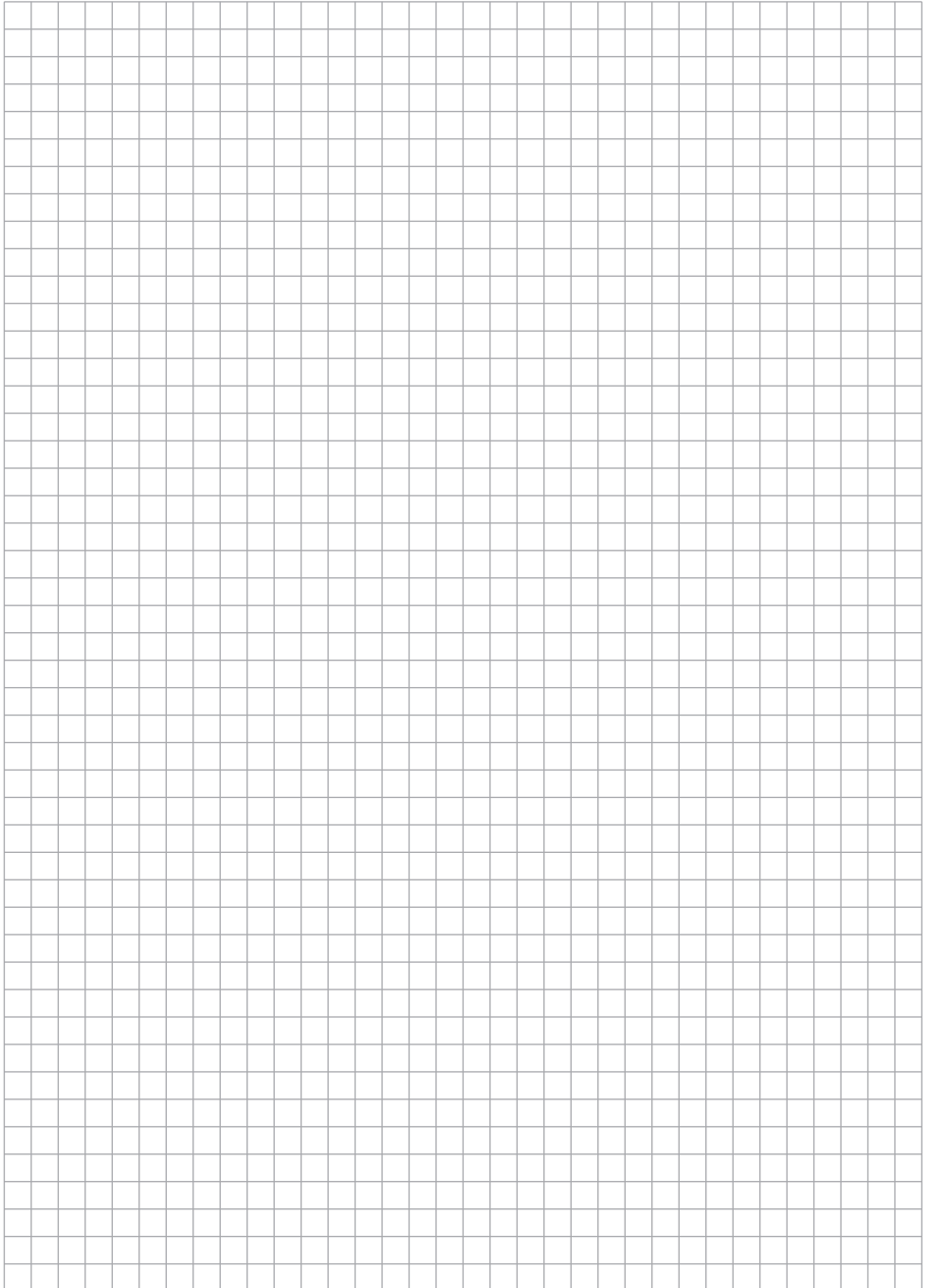




	1	2	3	4	5	6	7	8							
A															
B															
C															
D															
E															
F															
										Datum	21.01.2010			Bilder	-
										Bearb.					
		Gepr.													
Zust.	Änderung	Datum	Name	Norm	Urspr.	Brs. f.	Brs. d.	Projektsystem Gesamt: Aktuell:	Blatt 17 von 18 Bl.						
	1			2											

	1	2	3	4	5	6	7	8							
A															
B															
C															
D															
E	<p>TO-220-3 T SUFFIX CASE 221AB Heatsink surface connected to Pin 2.</p> <p>Pin 1. Input 2. Ground 3. Output</p> <p>DPAK-3 D2T SUFFIX CASE 936</p>														
F															
										Datum	21.01.2010			Druckliste	-
										Bearb.					
		Gepr.													
Zust.	Änderung	Datum	Name	Norm	Urspr.	Brs. f.	Brs. d.	Projektsystem Gesamt: Aktuell:	Blatt 10 von 18 Bl.						
	1			2											

NOTES



NOTES



ROTHENBERGER Worldwide

Australia	ROTHENBERGER Australia Pty. Ltd. Unit 12 • 5 Hudson Avenue • Castle Hill • N.S.W. 2154 Tel. + 61 2 / 98 99 75 77 • Fax + 61 2 / 98 99 76 77 rothenberger@rothenberger.com.au www.rothenberger.com.au	Netherlands	ROTHENBERGER Nederland bv Postbus 45 • NL-5120 AA Rijen Tel. + 31 1 61 / 29 35 79 • Fax + 31 1 61 / 29 39 08 info@rothenberger.nl • www.rothenberger.nl
Austria	ROTHENBERGER Werkzeuge- und Maschinen Handelsgesellschaft m.b.H. Gewerbeplatzstraße 9 • A-5081 Anif near Salzburg Tel. + 43 62 46 / 7 20 91-45 • Fax + 43 62 46 / 7 20 91-15 office@rothenberger.at • www.rothenberger.at	Poland	ROTHENBERGER Polska Sp.z.o.o. Ul. Annopol 4A • Budynek C • PL-03-236 Warszawa Tel. + 48 22 / 2 13 59 00 • Fax + 48 22 / 2 13 59 01 biuro@rothenberger.pl • www.rothenberger.pl
Belgium	ROTHENBERGER Benelux bvba Antwerpsesteenweg 59 • B-2630 Aartselaar Tel. + 32 3 / 8 77 22 77 • Fax + 32 3 / 8 77 03 94 info@rothenberger.be • www.rothenberger.be	Portugal	SUPER-EGO TOOLS FERRAMENTAS, S.A. Apartado 62 - 2894-909 Alcochete - PORTUGAL Tel. + 351 91 / 939 64 00 • Fax + 351 21 / 234 03 94 sul.p@rothenbergeres
Brazil	ROTHENBERGER do Brasil Ltda. Rua marinho de Carvalho, No. 72 - Vila Marina 09921-005 Diadema - Sao Paulo - Brazil Tel. + 55 11 / 40 44 47-48 • Fax + 55 11 / 40 44 50-51 vendas@rothenberger.com.br • www.rothenberger.com.br	South Africa	ROTHENBERGER-TOOLS SA (PTY) Ltd. P.O. Box 4360 • Edenvalle 1610 165 Vanderbijl Street, Meadowdale Germiston Gauteng (Johannesburg), South Africa Tel. + 27 11 / 3 72 96 33 • Fax + 27 11 / 3 72 96 32 info@rothenberger-tools.co.za
Bulgaria	ROTHENBERGER Bulgaria GmbH Boul. Sitnikovo 79 • BG-1111 Sofia Tel. + 35 9 / 2 9 46 14 59 • Fax + 35 9 / 2 9 46 12 05 info@rothenberger.bg • www.rothenberger.bg	Spain	ROTHENBERGER S.A. Ctra. Durango-Elorrio, Km 2 • E-48220 Abadiano (Vizcaya) (P.O. Box) 117 • E-48200 Durango (Vizcaya) Tel. + 34 94 / 6 21 01 00 • Fax + 34 94 / 6 21 01 31 export@rothenbergeres • www.rothenbergeres
Chile	ROTHENBERGER Chile Limitada Santo Domingo, 1160 Piso 11 • Oficina 1101 Santiago de Chile • Chile Tel. + 56 241 791 30 • Fax + 56 253 964 00 ventas.chile@rothenbergeres	Switzerland	ROTHENBERGER (Schweiz) AG Herost. 9 • CH-8048 Zürich Tel. +41 (0)44 435 30 30 • Fax 41 (0)44 401 06 08 info@rothenberger-werkzeuge.ch
China	ROTHENBERGER Pipe Tool (Shanghai) Co., Ltd. D-4, No.195 Qianpu Road, East New Area of Songjiang Industrial Zone, Shanghai 201611, China Tel. + 86 21 / 67 60 20 77 • Fax + 86 21 / 67 60 20 61 Fax + 86 21 / 67 60 20 63 • office@rothenberger.cn	Turkey	ROTHENBERGER Tes. Alet ve Mak. San. Tic. Ltd. Sti Poyraz Sok. No: 20/B - Detyal Is Merkezi TR-34722 Kadiköy-Istanbul Tel. +90 / 216 449 24 85 pbx • Fax +90 / 216 449 24 87 rothenberger@rothenberger.com.tr
Czech Republic	ROTHENBERGER CZ, národní a stroje. spol. s r.o. Lnářská 907 / 12 • 104 00 Praha 10 - Uhřetiny Tel. +42 02 / 71 73 01 83 • Fax +42 02 / 71 73 01 87 info@rothenberger.cz • www.rothenberger.cz	UAE	ROTHENBERGER Middle East FZCO PO Box 261190 • Jebel Ali Free Zone Dubai, United Arab Emirates Tel. +971 / 48 83 97 77 • Fax +971 / 48 83 97 57 office@rothenberger.ae
Denmark	ROTHENBERGER Scandinavia A/S Fåborgvej 8 • DK-9220 Aalborg Øst Tel. + 45 98 / 15 75 66 • Fax + 45 98 / 15 68 23 rosca@rothenberger.dk	UK	ROTHENBERGER UK Limited 2, Kingsthorpe Park, Henson Way, Kettering • GB-Northants NN16 8PX Tel. + 44 15 36 / 31 03 00 • Fax + 44 15 36 / 31 06 00 info@rothenberger.co.uk
France	ROTHENBERGER France S.A. 24, rue des Drapiers, BP 45033 • F-57071 Metz Cedex 3 Tel. + 33 3 / 87 74 92 92 • Fax + 33 3 / 87 74 94 03 info-fr@rothenberger.com	USA	ROTHENBERGER USA LLC 4455 Boeing Drive, USA - Rockford, IL 611 109 Tel. + 1 / 8 15 3 97 70 70 • Fax + 1 / 8 15 3 97 82 89 www.rothenberger-usa.com
Germany	ROTHENBERGER Deutschland GmbH Industriestraße 7 • D-65779 Kelkheim/Germany Tel. + 49 61 95 / 800 3 13 • Fax + 49 61 95 / 800 365 verkauf-deutschland@rothenberger.com		ROTHENBERGER USA Inc. Western Regional Office • 955 Monterey Pass Road Monterey Park, CA 91754 Tel. + 13 23 / 2 68 13 81 • Fax + 13 23 / 26 04 97
	ROTHENBERGER Werkzeuge Produktion GmbH Lilienthalstraße 71 - 87 • D-37235 Hessisch-Lichtenau Tel. + 49 56 02 / 93 94 - 0 • Fax + 49 56 02 / 93 94 36		
Greece	ROTHENBERGER Hellas S.A. Agias Kyriakis 45 • 17564 Paleo Faliro • Greece Tel. + 30 210 94 02 049 • +30 210 94 07 302 / 3 Fax + 30 210 / 94 07 322 ro-he@otenet.gr • www.rothenberger.gr	Russia	ROTHENBERGER Russia Avtosavodskaya str. 25 115280 Moscow, Russia Tel. + 7 495 / 792 59 44 • Fax + 7 495 / 792 59 46 info@rothenberger.ru • www.rothenberger.ru
Hungary	ROTHENBERGER Hungary Kft. Gubacsi Ut 26 • H-1057 Budapest Tel. + 36 1 / 5 47 - 50 40 • Fax + 36 1 / 3 47 - 50 59 info@rothenberger.hu	Romania	S.C. ROWALT S.R.L. Str. 1 Mai 4 RO-075100 Otopeni-Bucharest Tel. +40 21 / 3 50 37 44 • +40 21 / 3 50 37 45 Fax +40 21 / 3 50 37 46 office@rothenberger-romania.ro
India	ROTHENBERGER India Private Limited B-1/D-5, Ground Floor Mohan Cooperative Industrial Estate, Mathura Road, New Delhi 110044 Tel. + 9111 / 41 69 90 40, 41 69 90 50 • Fax + 9111 / 41 69 90 30 contactus@rothenbergerindia.com		
Ireland	ROTHENBERGER Ireland Ltd. Shannon Industrial Estate Shannon, Co. Clare Tel. + 35 3 61 / 47 21 88 • Fax + 35 3 61 / 47 24 36 rothen@iol.ie		
Italy	ROTHENBERGER Italiana s.r.l. Via G. Reiss Romoli 17-19 • I-20019 Settimo Milanese Tel. + 39 02 / 33 50 601 • Fax + 39 02 / 33 50 01 51 rothenberger@rothenberger.it • www.rothenberger.it		
Mexico	ROTHENBERGER México S DE RL DE VC Bosques de Duraznos No. 69-1101 Torre A Bosques de las Lomas • México 11700 D.F. Miguel Hidalgo Tel. + 52 55 / 35 42 37 62 • Fax + 52 55 / 55 31 56 34 ventas.mexico@rothenbergeres		

ROTHENBERGER Agency

ROTHENBERGER Russia
Avtosavodskaya str. 25
115280 Moscow, Russia
Tel. + 7 495 / 792 59 44 • Fax + 7 495 / 792 59 46
info@rothenberger.ru • www.rothenberger.ru

ROTHENBERGER Werkzeuge GmbH

Industriestraße 7

D- 65779 Kelkheim / Germany

Telefon + 49 (0) 61 95 / 800 - 1

Fax + 49 (0) 6195 / 800 - 3500

info@rothenberger.com

www.rothenberger.com